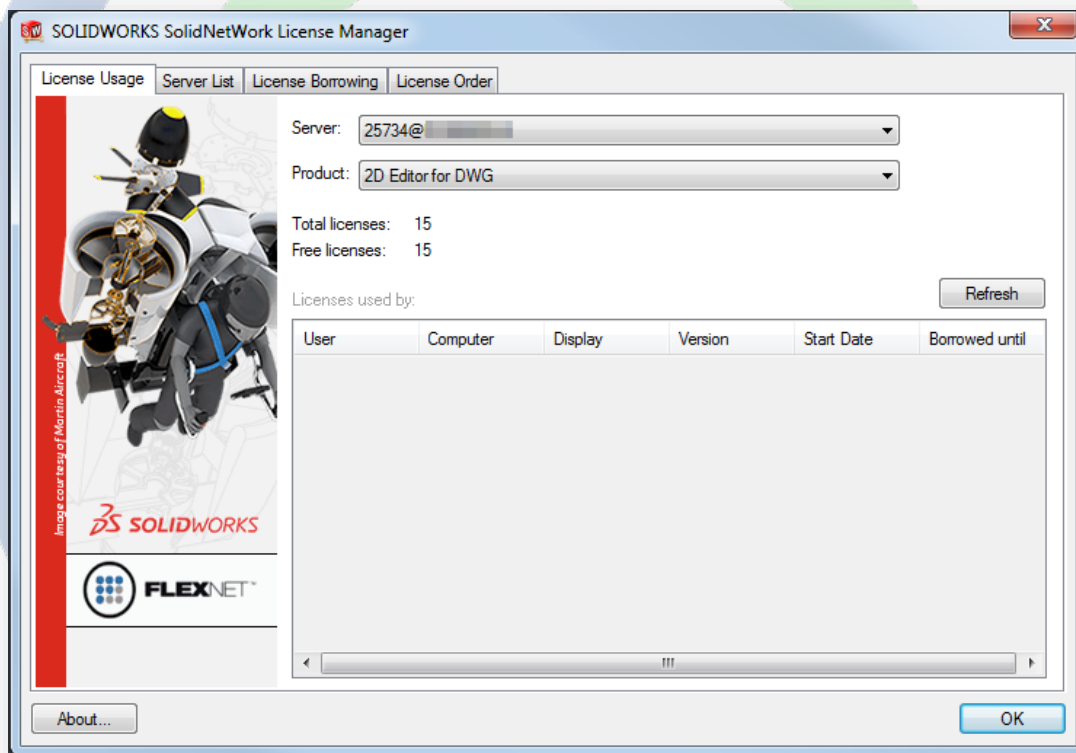


License Borrowing

This article will guide you through the process of borrowing a license. Please note that you must be connected to the SolidNetWork License Manager when you borrow a license and when you return it, but not necessarily when you use it. Normally to use a network version of SOLIDWORKS, you must be connected to the server machine at all times. Borrowing a license allows you to temporarily work from a remote location.

Borrow a License

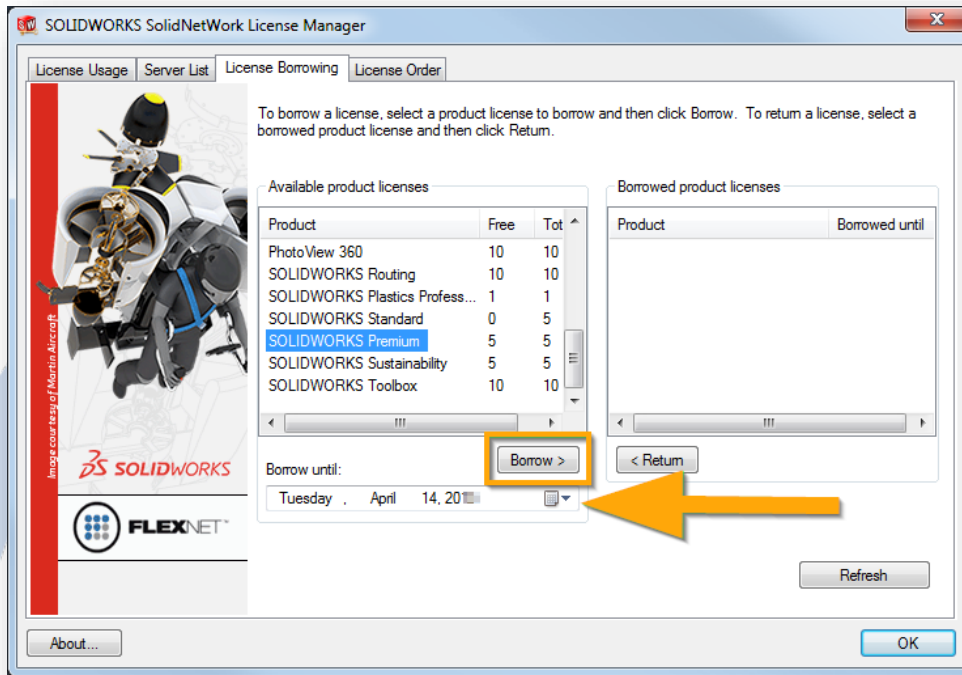
1. On a client machine, open the SolidNetWork License Manager. By default, this can be opened from **Start > All Programs > SOLIDWORKS 20XX > SOLIDWORKS Tools > SolidNetWork License Manager Client 20XX**.



Questions? Call us or send us an email!

(732) 669-0055 Option 3 support@design-point.com

- From the **License Borrowing** tab, select the **Borrow until** date and click **Borrow**.

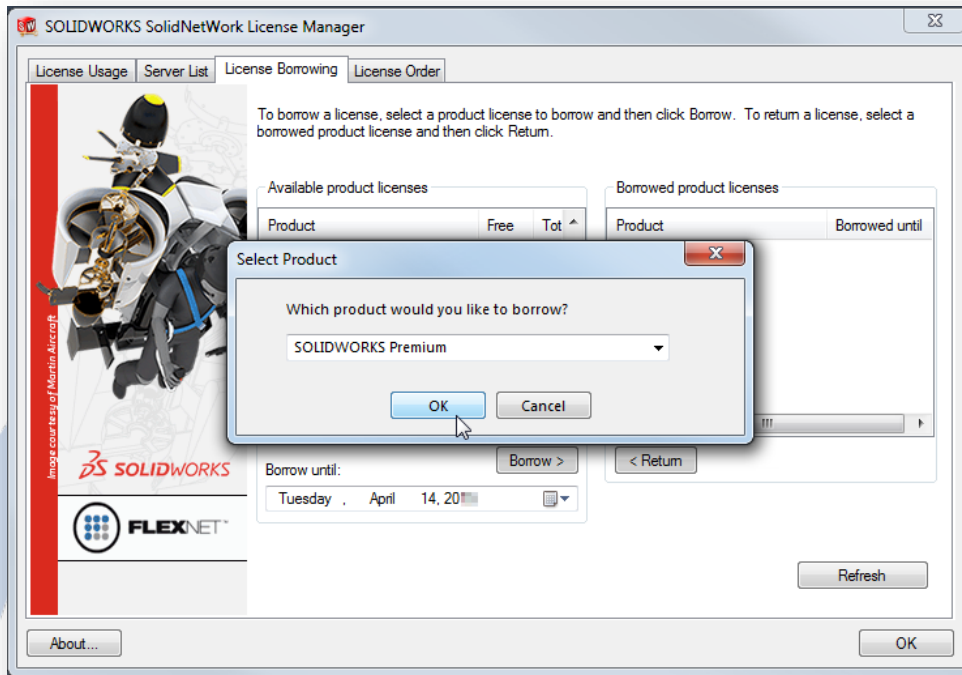


- Select the product you would like to borrow from the drop-down menu and click **OK**.



Questions? Call us or send us an email!

(732) 669-0055 Option 3 support@design-point.com

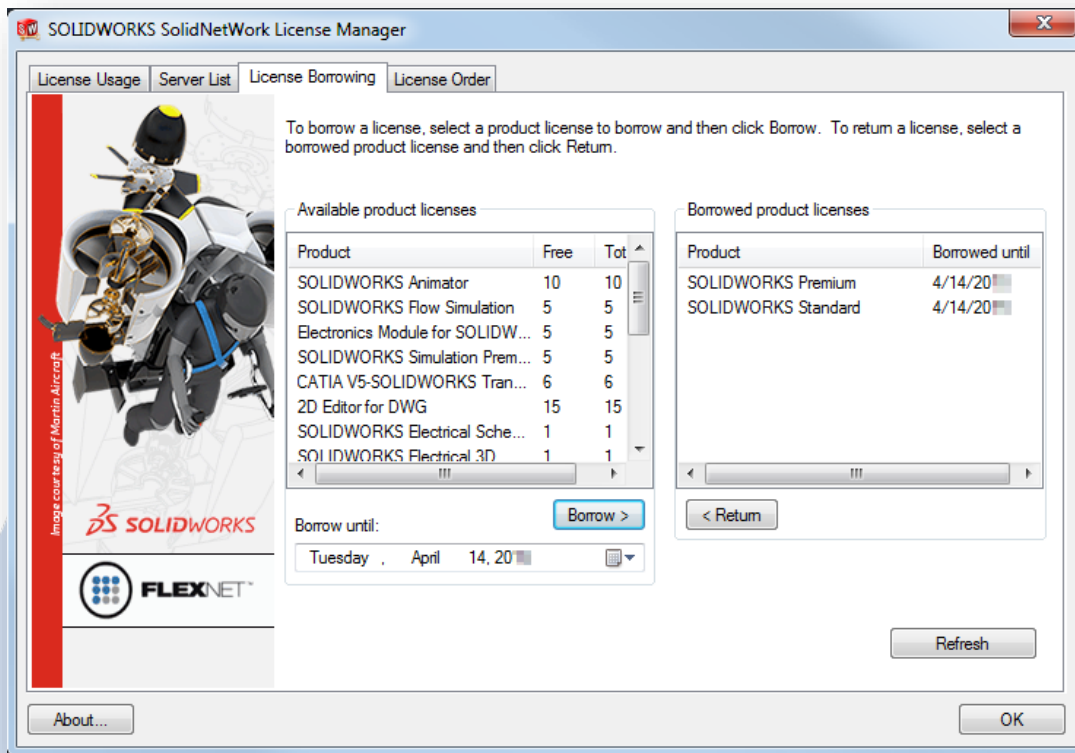


4. Under **Borrowed product licenses** you will now see your selection and the date.



Questions? Call us or send us an email!

(732) 669-0055 Option 3 support@design-point.com



Return a License

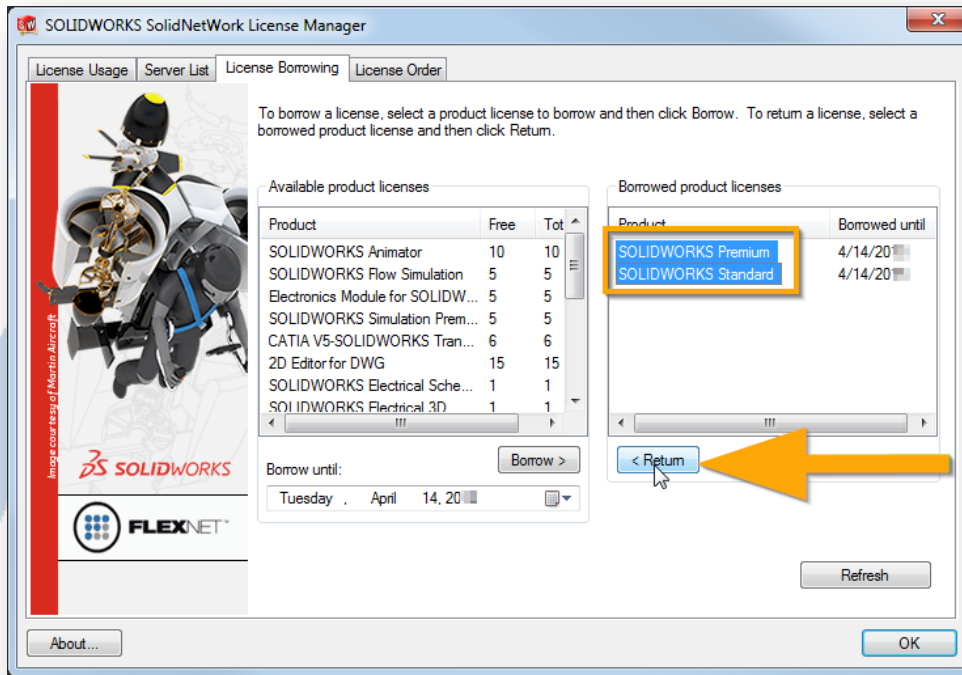
1. To return a borrowed license, first make sure you're connected to the server machine.
2. On the client machine, open the SolidNetWork License Manager. By default, this can be opened from **Start > All Programs > SOLIDWORKS 20XX > SOLIDWORKS Tools > SolidNetWork License Manager Client 20XX.**



Questions? Call us or send us an email!

(732) 669-0055 Option 3 support@design-point.com

- From the **License Borrowing** tab, select the products you want to return and click **Return**.



- These licenses should now be removed from the **Borrowed product licenses** list. Click **OK** to finish.



Questions? Call us or send us an email!

(732) 669-0055 Option 3 support@design-point.com