

bigrep STUDIO



FAST AND PRECISE **LARGE-SCALE 3D PRINTING IN ONE COMPACT PACKAGE**

With the Bigrep® STUDIO, we introduce a workhorse printer that brings a new dimension to large-scale 3D printing. The industrial-grade quality machine has a print volume of 500 mm x 1000 mm x 500 mm that enables continuous printing of large objects in a space-saving package. Fitting easily through doors, the size of the STUDIO is optimal for setting up the printer in all workspaces.



The dual extruder equipped with two 0.6 mm hot ends has been specially designed for speed and precision. The direct-drive all-metal hot end allows for printing of a larger variety of high-performance filaments.



Accelerated & Precise Printing
The Print Head

The direct drive extruder with two 0.6 mm hot ends enables printing using industrial materials at maximum speed and precision. Its innovative print head was specially designed to achieve a high level of detail for large-scale print projects, allowing for a layer height of as little as 0.1 mm.



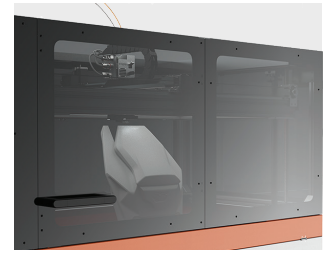
Comfortable to Use
Slim Build, Ergonomic Design

Raised for maximum user comfort, the Bigrep STUDIO stands at an ideal height for everyday use. Keeping everything compact and accessible, two filament spools can be held below the printer, alongside additional storage space.



Easy and Intuitive
The Graphical User Interface

The new intuitive user interface on touch panel PC enables many new features, such as remote load, check print progress via webcam, change print parameters, resume print after power failure, and many more.



Enclosed Environment
The Slide Walls

The STUDIO's side-wall housing for increased safety, including auto-pause of print jobs upon opening. The semi-transparent doors enable users to visually monitor the printing process and slide back to provide easy access to the print bed.

TECHNICAL SPECIFICATIONS

Build volume	x 1000 y 500 z 500 (mm)
Layer height resolution	100 – 500 microns
Acceleration	Up to 600 mm/s²
Extruder	Dual extruder Equipped with two 0.6 mm hot ends
Printing technology	FFF – Fused-Filament-Fabrication (FDM)
Certified Bigrep materials	PLA, PETG, Pro HT, Pro HS, Pro FLEX Other filaments upon request
Print bed temperature	Max. 75 °C
Printer weight	Approx. 350 kg
Size	x 1693 y 1056 z 1506 (mm)
Power	208 V – 240 V, 16 A, 50/60 Hz
Safety certifications	CE approved

bigrep.com

EUROPE
Gneisenaustraße 66
10961 Berlin
Germany
Phone +49 30 20 84 82 60

NORTH AMERICA
400 West Cummings Park
Suite 1675
Woburn, MA 01801, USA
Phone +1 781 281 0569

APAC
120 Lower Delta Road
#04-04/05 Cendex Centre
Singapore 169208
Phone +65 6909 8191